



The Banner

Every person feels, knows and shares God's love

Monthly Newsletter for Bethany United Methodist Church • Madison, WI • Vol. 54, No. 3 • March 2021

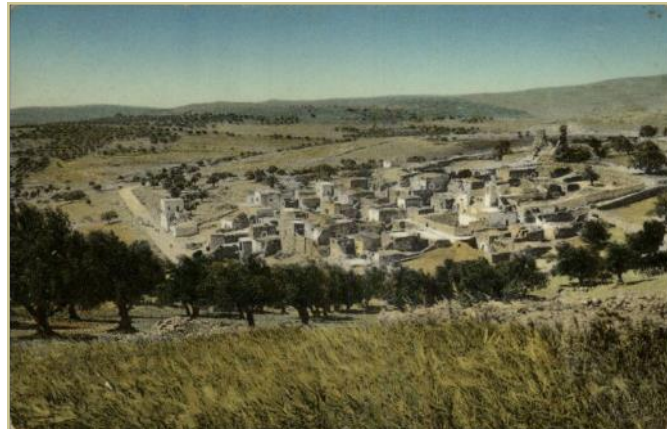
How Our Church Was Named—70 Years Ago

The building standing tall among the trees at 3910 Mineral Point Road is called Bethany United Methodist Church...but when founded in 1948, it was given a different name — Westside Community Methodist Church.

Young Rev. Robert Adams came in 1950 to be the church's first full-time pastor for the rapidly growing congregation. In 1951, as leaders were considering incorporating the church, they suggested that members of the congregation should choose a permanent name for the church before filing incorporation papers. To take a poll, a postcard was sent to households with a list of four choices and a reminder that, "The winner will be our incorporated name for the remainder of this church's life, unless changed again. Pick the one that you think will still be good 50 years from now!"

At a congregational meeting on March 6, 1951 members officially chose the name Bethany Methodist Church over the other choices listed on the postcard (West Side Methodist, Church of the Good Shepherd, and Midvale Methodist Church).

During worship one Sunday morning soon after the vote, Rev. Bob Adams preached about the new name. He began by telling about the biblical village of Bethany, "located two miles east of Jerusalem, on the road to Jericho, on the south slope of the Mount of Olive."



It's where Jesus and his disciples often gathered with his friends Mary, Martha and Lazarus. "It was a place of mutual fellowship, of mutual strength and enrichment...bound together by a mutual love of God and respect for each other."

"But the first Bethany was more than a place of fellowship with each other. It was also a place of fellowship with God. The old village of Bethany is a place full of the memories of the moments and hours of worship and prayer of the disciples and their master. Our Bethany ought always to be that too — a house of prayer for all peoples, a place where a person can praise God in quietness, listening for that still, small voice which is that of God in every human."

The young congregation made a wise choice. Now 70 years later, Bethany remains a good name for our church — a place to be strengthened and enriched by mutual fellowship with God and with members of the church.





PASTOR'S COLUMN



Lent Means Spring — Are You Ready for Growth?

The word “Lent” is derived from a word for “Spring.” Yes, we often hear the Lenten season associated with sacrifice and repentance and even fasting — and all of those practices can deepen one’s Christian faith. But the thawing of the snow, the budding of trees, and the springing forth of the first flowers usually all take place during the days of Lent. It’s a time for things to warm up, it’s a time for growth.



Are you ready for all of that? I think all of us are certainly ready for the snow to thaw. Perhaps especially because we were cooped up for months before the snows even arrived, this winter has felt longer than most. So yes we are ready for warm air and sunshine and all the growth that comes with that.

I hope that we are also ready for the other kinds of growth that can come during Lent — growing in our faith, growing in our spiritual commitment, growing in our relationship with God, growing in our relationships with people, growing peace in our society, and more. Along those lines, here are a couple new opportunities at Bethany that I want to recommend:

Lenten Study on Racial Justice — Rod McKenzie has agreed to lead this study on the four Sundays of March at 11:15 a.m. on Zoom. We will be using a curriculum written by our Bishop, Dr. Hee Soo Jung, *Together in Christ, a Lenten Study on Beloved Community: A Radical Inclusion and Racial Justice Resource*. I’ve looked through the resource, and I think it will generate some excellent discussions, helping us to reflect on how we can build stronger communities

through racial reconciliation. Even if you are unable to attend all the sessions, I encourage you to download the study guide from our website and reflect on how all of us can grow.



This study is being sponsored by both the Outreach Team and the Adult Ministries Team.

The Pastor’s Bible Study Class is about to start a new series, and this is an excellent time to join the class. We meet on Zoom on Thursdays from 10:00 to 11:15 a.m. We will soon complete our 36-week study on the history of Christianity. Beginning on March 18, we will launch a new series on *Great Figures of the New Testament*. Each week we will focus in depth on a different person in the biblical story. Some of the people will be highly familiar to us, including Mary, John the Baptist, Peter, Paul, and of course Jesus. Others will be less familiar, for instance the Centurions, Stephen, Philip, the Samaritan Woman, and many more. I can guarantee that our understanding of the Bible will grow through this study. We invite you to join us!

Blessings in Christ,
Pastor Greg

**The world
would be a
nicer place
if everyone
had the ability
to love as
unconditionally
as a dog.**

M.K. Clinton



Simple Gifts for March — “Madison Area Food Pantry Gardens”

Simple Gift offerings made during March are going to support the Madison Area Food Pantry Gardens, is an organization dedicated to providing local food pantries with fresh, nutritious, and culturally relevant vegetables.

This local, non-profit, and volunteer organization has grown and donated more than 2 million pounds of fresh, first-choice vegetables to the Dane County emergency food system since its inception two decades ago.

Although we are currently not meeting in person due to the COVID-19 pandemic, your Simple Gift offerings remain important so Bethany’s mission can continue. Please either mail in your offering or you can give online at BethanyMadison.org (click on We Serve and, from the drop-down menu, select Giving Financially).

Donations to the Madison Area Food Pantry Gardens (MAFPG) are used to purchase seeds, plants, supplies, and equipment needed by MAFPG to continue to feed our neighbors in need.

The organization and its many volunteers plant, tend, and grow produce at a network of nine gardens across Dane County thanks to generous landowners, affiliated churches, and donors. These gardens range in size from less than one acre to 12 acres.

Working together with local food pantries and food banks, MAFPG establishes what vegetables are needed by users of the emergency food system. This means MAFPG is able to fill gaps by producing desired vegetables that meet the cultural needs of our community.

MAFPG dates to the late 1990s, when several churches and service clubs began collecting surplus produce from the Saturday Farmer’s Market on the Square and from the Fitchburg, Hilldale, and Middleton Farmer’s Markets. While more than 2,000 pounds of produce was collected each week, especially in the late summer, it still was not enough to satisfy the need for fresh produce across Dane County’s food pantries.



In 2000, three one-acre garden plots were then established, which produced an estimated 60,000 pounds of produce during the summer and fall.

Today, two decades later, MAFPG reports that in an average year it’s able to grow 100,000 pounds of produce while gleaning an additional 50,000 pounds of vegetables.

Please give generously, as your support will make a difference in real and relevant ways.

To learn more, visit: foodpantrygardens.org

Up next: Simple Gifts in April will go to support Ardell Graner, our Global Mission Partner in the Dominican Republic.



2021 Special Sundays



Over the course of 2021, Bethany will participate in several special offering Sundays sponsored by the broader United Methodist Church.

In the sharing of our gifts on these Special Sundays, as Methodists we are able to come together and make a significant difference in a way that no individual can do on his or her own.

March 14 is UMCOR Sunday — previously known as One Great Hour of Sharing. UMCOR Sunday enables the United Methodist Committee on Relief to reach out through worldwide ministries of food, shelter, health, and peace.



UPCOMING ACTIVITIES



ZOOM LINKS

Zoom links for all classes and groups are listed on the Bethany website on the Upcoming Events page. From the home page, click on the "Groups and Classes" box at the bottom right of the page. Links are listed by the day of the week they occur on.

SUSANNA CIRCLE

The next meeting of the Susanna Circle UMW will be Wednesday, March 3rd at 1:00 pm on Zoom. Pastor Greg Jewison will be our program speaker. All women are welcome. Any questions, contact Faith Bauman (661-0470) or Judy Loveless (848-8243).

LYDIA FELLOWSHIP

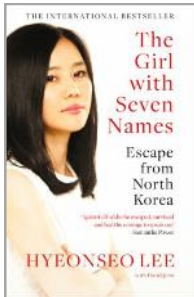
The next meeting of Lydia Fellowship is scheduled for Monday, March 8th at 1:00 pm on Zoom hosted by Diane Johnson.

AGAPE

Please join us for Agape on Wednesday, March 10 at 6:00 pm via Zoom. Following a short business meeting, Gail Steinhart will present a program entitled *Tip Toe Through the Tulips*. She will tell about her trip to the Netherlands during "tulip time." It promises to be a delightful evening.

REFLECTIONS BOOK STUDY

Reflections Book Study will meet Monday, March 22nd at 1:00 pm via Zoom. The book for March is *The Girl With Seven Names: A North Korea Defector's Story* by Hyeonseo Lee.



The book provides an extraordinary insight into life under one of the world's most ruthless and secretive dictatorships. It is also the story of one woman's terrifying struggle to avoid capture/repatriation and guide her family to freedom.

Join in for a lively discussion even if you haven't read the book.

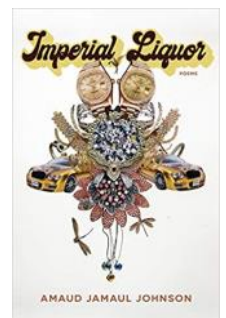
MEMBER CARE

Our Prayers and Sympathies are with...

- ✝ The family of Margaret Kmiotek who died February 5th. Margaret had celebrated her 100th birthday on Feb. 2nd.

Congratulations to...

- 📖 UW English professor and Bethany member Amaid Johnson who is one of five finalists for the 2020 National Book Critics Circle Award for Poetry for his book, *Imperial Liquor*.



CHILDREN'S BOOKS

Reading with children is one way to nurture faith development. Here are a few of the titles that have recently been shared in worship and Sunday School:

Love: The Lord's Prayer (Sally Lloyd-Jones), *This is the Church* (Sarah Raymond Cunningham), *Ashley Bryan's ABC of African-American Poetry* (Ashley Bryan) and *The Story of Saint Valentine* (Laura Wagner)





ANNOUNCEMENTS



FINANCIAL CONTRIBUTIONS

Thanks to Mary Schroeder who has been preparing the bank deposit every 2 weeks. This is a different and more labor-intensive task than it was when two counters prepared the deposit on Sunday morning. Also, thanks to those who have been making their contributions online. This reduces the number of checks that Mary must process manually and, since I can process these contributions from home, it can be completed in a more timely fashion. You are encouraged to make your contributions online.

When making contributions online there are a few things to keep in mind.

1. If making contributions directly from your bank account (rather than a credit card), consider making them on the 5th or the 20th of the month. This makes the work of the Treasurer and Financial Secretary easier. It also reduces the transaction fees the church is charged.
2. If you are making regular one-time payments each month, you might want to consider setting up a recurring contribution for the 5th or 20th of each month. You won't have to remember to do it each month and the contribution can be stopped anytime by contacting the Financial Secretary or setting up an account in Realm
3. If you have more than one email address, make sure that you always use the same email when making your contribution. Using a different address will result in a duplicate record, which we may not catch right away. It will also result in you receiving multiple statements. Please contact the church office if you're not sure what email address is associated with your account or to make changes to your account email.

When we moved to our new software the old accounts for making online contributions were canceled and can no longer be accessed. A new account can be set up in Realm (our new software) but, to do so, you would have to accept the invitation that was emailed out a couple months ago. If you did not respond to that email and would like to set up an account, contact the church office and a new link will be emailed to you.

Learning the ins and outs of a new program takes time and unexpected things sometimes happen. If you have questions or need help with statements or contributions, please contact me via email (FinancialSecretary@BethanyMadison.org) or phone (608-833-4567).

— Sandra Arrington, Financial Secretary

MEMORIAL GIFTS RECEIVED IN JANUARY

For Judy Franks: Bob Forbess and Eunice Reep

PUZZLE EXCHANGE

During this time of concern with Covid-19, many of us remain isolated and have to spend considerable time indoors. Several Bethany members have indicated they enjoy working on puzzles to help pass the time. Yet, as one member noted, "I have completed all the puzzles that I have and would like to obtain new ones." Thus, it has been suggested that a puzzle exchange be established at Bethany.

If one wishes to be involved, drop off and pick up puzzles at the church office (but call first). When a supply of them has been established at Bethany, a puzzle can be borrowed. We hope to build up a large enough supply to meet the puzzle interests of many members.



For Children's Ministry information, contact Lisa Weaver, Director of Children's Ministries
Phone: (608) 238-6381 / Email: childrensministries@bethanymadison.org

An Art Gallery from Zoom Sunday School

It is hard to believe, but our children's Sunday School class has met on Zoom for almost a year by now. Since the beginning, I have been encouraged by the smiles and conversation of the children as we peer out from our little Zoom screens at each other. We have enjoyed Bible stories, danced to music with Ms. Lori, shared our Joys and Concerns, created story scenes with items from our homes, and completed art projects. Below, and on the next page, is just a small sample of some of the artwork inspired by recent Bible stories:

Baptism of Jesus in the Jordan River (Matthew 3:13-17), Jesus Calling the Disciples (Matthew 4:18-22), Showing Love (Matthew 5:43-48) and God's Kingdom (Luke 13:18-21).

All children up through 5th grade are invited to join in on Sunday mornings at 9:00 am. The Zoom link is posted on the church website, and included in the Worship Guide that Pastor Greg sends out on the weekend.

It works well to have a grown-up nearby to support with Zoom technology, or to help find supplies. We encourage flexibility and creativity, and are delighted to develop adaptations of projects, with whatever materials you have on hand at your home. Hope to see you there!

— Ms. Lisa



Jordan River by Teddy



Jordan River by Lisa



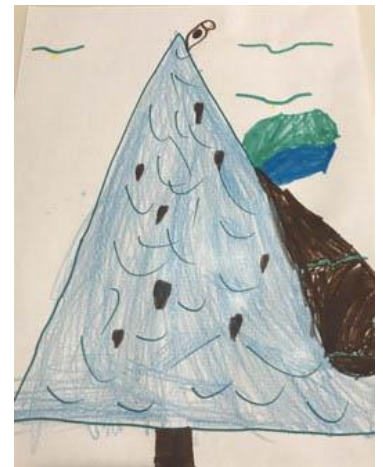
Jordan River by Ember



Trees by Erik



Trees by Amelia



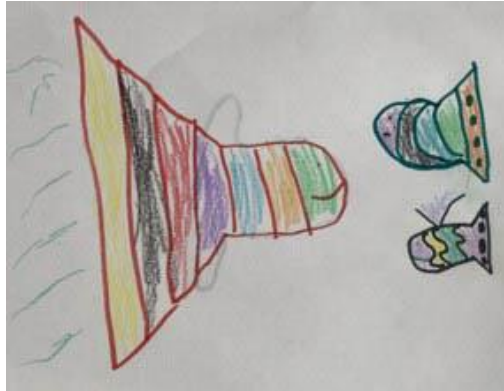
Trees by Elizabeth



Fish by Amelia



Fish by Teddy



Fish by Ethan



Love Bug by Erik



Love Bug by Lisa



Love Bug by Elizabeth



Ethan and Elizabeth help Lisa tell about Love Bugs

A LOOK AT OUR FAITHFULNESS

Sunday, Jan. 24
Total 170

Sunday, Jan. 31
Total..... 168

Sunday, Feb 7
Total.....189

Sunday, Feb. 14
Total..... 158

Sunday, Feb. 21
Total..... 171



We are a Reconciling Congregation,
 welcoming all people to be a part of
 our church family.

Information

Office Hours: 8 am - 2:30 pm

Church Office: (608) 238-6381

Email: bethanyoffice@bethanymadison.org

Website: www.bethanymadison.org

Sunday Morning Schedule

Early Bird Coffee Chat (Zoom)	8:30 am
Faithlink Adult Discussion Class	9 am
Zoom Worship	10 am
After-Worship Fellowship (Zoom)	11 am

Bulletin Deadline : Tuesdays at Noon
E-Banner Deadline: Tuesdays at Noon
Banner Deadline for the April Issue: March 15th

Staff

Lead Pastor.....	Greg Jewison
Pastor of Visitation	Brad Mather
Director of Children’s Ministries	Lisa Weaver
Director of Youth Ministries	Brigit Parlow
Global Mission Partners.....	Ardell & Gordon Graner, Dominican Republic
.....	Temba Nkomozepe, Mujila Falls, Zambia
Director of Music.....	Taras Nahimiak
Organist	Sue Poullette
Director of Bell Choirs	Nick Bonaccio
Director of Children & Youth Choirs	Lori Nahimiak
Office Administrator	Carl White
Membership Secretary.....	Betsy Dunne
Financial Secretary	Sandra Arrington
Treasurer.....	Steven Webster
Custodians.....	Ron Rebholz
Church Phone	(608) 238-6381
Church Office Email	bethanyoffice@bethanymadison.org
Website.....	www.bethanymadison.org

Banner Assembly

Mary Blasdel . Gerry Cotter . Judy Cox . Betsy Dunne . Eileen Dunne
 Sally Gaard . Vada Mayfield . Kathy Nelson
 Gail Steinhorst . Donna Wold